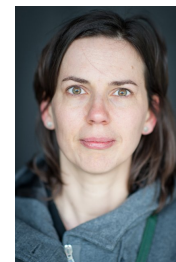


Anne Winter  
Professor of History  
Historical Research into Urban Transformation Processes  
Faculty of Arts



Postal address:  
Pleinlaan 2  
1050  
Brussels  
Belgium  
Email: Anne.Winter@vub.be

## Expertise

Anne Winter (MA VUB 2001, MSc LSE 2002, PhD VUB 2007) is Professor of History and part of the research team Historical Research into Urban Transformation Processes (HOST) at the VUB, of which she was director from 2011 to 2021. She was awarded the 6-yearly prize I. Vanderschueren for the best PhD in the Human Sciences by the Research Council of the VUB (2010), and the 3-yearly prize of the Flemish Scientific Foundation (2011) awarded by the Royal Flemish Academy of Belgium for Sciences and the Arts, and was Francqui Research Professor at the VUB from 2012-2015. She spent extended research stays at Somerville College (University of Oxford) and Ecole des Hautes Etudes en Sciences Sociales (Paris), and held the Van Dyck Chair at University of California - Los Angeles during Spring Term 2017. She was/is editor of *TSEG – Low Countries Journal of Social and Economic History* (2010-2016), *BMGN – Low Countries Historical Review* (2017-2019), and *Journal of Migration History* (since 2019).

## Research output

### **Cities in Motion: Mobility, Migration Selectivity and Demographic Change in Belgian Cities, 1846-1910**

Greefs, H. & Winter, A., 2020, *Inequality and the City in the Low Countries (1200-2020)*. Blondé, B., Geens, S., Greefs, H., Ryckbosch, W., Soens, T. & Stabel, P. (eds.). Brepols Publishers, p. 79-100 22 p. (Studies in European Urban History; vol. 50).

### **Foreign Female Sex Workers in an Atlantic Port City: Elite Prostitution in Late Nineteenth-Century Antwerp**

Greefs, H. & Winter, A., 2020, *Migrants and the Making of the Urban-Maritime World: Agency and Mobility in Port Cities, c. 1570–1940*. Christina, R. & Martin, Ö. (eds.). Routledge, p. 195-221 26 p. (Routledge Advances in Urban History; vol. 8).

### **Introduction: Migration Policies and Materialities of Identification in European Cities: Papers and Gates, 1500–1930s**

Greefs, H. & Winter, A., 2020, *Migration Policies and Materialities of Identification in European Cities: Papers and Gates, 1500–1930s*. Greefs, H. & Winter, A. (eds.). Abingdon: Routledge, p. 3-23 21 p.

### **Migration Policies and Materialities of Identification in European Cities: Papers and Gates, 1500-1930s**

Greefs, H. (ed.) & Winter, A. (ed.), 2020, Abingdon: Routledge. 320 p. (Routledge Advances in Urban History; no. 2)

### **Welfare and demography in the time of Malthus. Regional and local variations in poor relief and population developments in Flanders, c. 1750-1810**

Devos, I., Lambrecht, T. & Winter, A., 2020, *Disuguaglianza economica nelle società preindustriali: cause ed effetti / Economic inequality in pre-industrial societies: causes and effect*. Nigro, G. (ed.). Firenze: Firenze University Press, p. 327-350 (Datini Studies in Economic History).

### **FCC-hh: The Hadron Collider: Future Circular Collider Conceptual Design Report Volume 3**

FCC Collaboration, Blekman, F. & Skovpen, K., 5 Jul 2019, 755 p.

### **FCC Physics Opportunities: Future Circular Collider Conceptual Design Report Volume 1**

FCC Collaboration & Blekman, F., 5 Jun 2019, 161 p.

### **Micro-Mobility in Flux: Municipal Migration Levels in the Provinces of Flanders and Antwerp, 1796-1846**

Winter, A. & Deschacht, N., 26 Apr 2019, In : *Journal of Migration History*. 5, 1, p. 1-30 30 p.

### **An old poor law on the Continent? Agrarian capitalism, poor taxes, and village conflict in eighteenth-century coastal Flanders**

Lambrecht, T. & Winter, A., Nov 2018, In : *Economic History Review*. 71, 4, p. 1173-1198 26 p.

**STREAM (Spatiotemporal Research Infrastructure for Early Modern Brabant and Flanders): Sources, Data and Methods**  
Devos, I., Torsten, W., Demey, R., Vrielinck, S., Lambrecht, T., De Maeyer, P., Ranson, E., Van den Berghe, M., Plettinck, G. & Winter, A., 1 Oct 2018, In : *International Journal of Humanities and Arts Computing*. 12, 2, p. 102-119 18 p.

**Preindustrial welfare between regional economies and local regimes: Rural poor relief in Flanders around 1800**  
Van Den Broeck, N., Lambrecht, T. & Winter, A., Aug 2018, In : *Continuity and Change*. 33, 2, p. 255-284 30 p.

#### **De humane stad.**

Ryckewaert, M., Aernouts, N., Ballon, P., Boussauw, K., Coene, G., Corijn, E., Donders, K., Heylighen, F., Heyman, R., Keserü, I., Macharis, C., Mariën, I., Maus, M., Pinxten, R., Van Den Houte, K., Van Der Graaf, S., Van Meeteren, M., Vanderstraeten, L., Vanhaeght, A-S., Walravens, N. & 1 others, Winter, A., 2017, ASP / VUBPRESS. 270 p.

#### **De vele gezichten van zorg: Armoede en armenzorg op het platteland in het graafschap Vlaanderen tijdens de achttiende eeuw'**

Lambrecht, T. & Winter, A., 2017, In : *Tijd-Schrift. Heemkunde en lokaal-erfgoedpraktijk in Vlaanderen*. 7, 1, p. 45-57

#### **Migratie maakt de stad. Een historisch perspectief op stad en migratie**

Winter, A., 2017, *De humane stad*. Ballon, P., Macharis, C. & Ryckewaert, M. (eds.). Brussels: ASP / VUBPRESS, p. 159-175 17 p.

#### **Migration, Settlement and Belonging in Europe, 1500-1930s: Comparative Perspectives**

Winter, A. (ed.) & King, S. (ed.), 1 Mar 2016, Paperback ed. New York: Berghahn. 326 p.

#### **Alone and Far from Home: Gender and Migration Trajectories of Single Foreign Newcomers to Antwerp, 1850-1880**

Greefs, H. & Winter, A., 2016, In : *Journal of Urban History*. 42, 1, p. 61-80 20 p.

#### **Een dwalend bestaan? Mobiliteit bij veroordeelde landlopers in België (1870-1914/30)**

Vercammen, R. & Winter, A., 2016, In : *Tijdschrift voor Sociale en Economische Geschiedenis*. 13, 2, p. 51-75 25 p.

#### **Rural crisis and rural exodus? Local migration dynamics during the crisis of the 1840s in Flanders (Belgium)**

Deschacht, N. & Winter, A., 28 Apr 2015, In : *Explorations in Economic History*. 56, p. 32-52 21 p.

#### **Migranten maken de stad. Migratie, diversiteit en conflict in historisch perspectief**

Winter, A., 2015, Brussels: VUBPRESS. 55 p. (Paul Verbraeken Lezing)

#### **Van ver gekomen? Migratieafstand, gender en sociale klasse bij buitenlandse nieuwkomers in Antwerpen tijdens de tweede helft van de negentiende eeuw**

Greefs, H. & Winter, A., 2014, *Kwetsbare groepen in/en historische demografie*. Devos, I., Matthijs, K. & Putte, B. V. D. (eds.). Leuven: Acco, p. 155-169 15 p. (Jaarboek Historische Demografie; vol. 2014).

#### **Migration, Settlement and Belonging in Europe, 1500–1930s: Comparative Perspectives**

Winter, A. (ed.), King, S. (ed.) & Van Der Linden, M. (ed.), Nov 2013, New York: Berghahn. 326 p. (International Studies in Social History)

#### **Circuits de migration vers un port en formation: Anvers, 1760-1860**

Winter, A., 2013, In : *Revue du Nord*. 95, p. 124-165 42 p.

#### **Introduction**

Innes, J., King, S. & Winter, A., 2013, *Migration, Settlement and Belonging in Europe, 1500–1930s: Comparative Perspectives*. King, S. & Winter, A. (eds.). New York: Berghahn, p. 1-28 29 p. (International Studies in Social History; vol. 23).

**Migration, Poor Relief and Local Autonomy: Settlement Policies in England and the Southern Low Countries in the Eighteenth Century**

Winter, A. & Lambrecht, T., 2013, In : Past & Present. 218, p. 91-126 36 p.

**Population and Migration: European and Chinese Experiences Compared**

Winter, A., 2013, *The Oxford Handbook on Cities in World History*. Clark, P. (ed.). Oxford: Oxford University Press, p. 403-420 18 p. (Oxford Handbooks in History).

**Settlement Law and Rural-Urban Relief Transfers in Nineteenth-Century Belgium: A Case Study on Migrants' Access to Relief in Antwerp**

Winter, A., 2013, *Migration, Settlement and Belonging in Europe, 1500–1930s: Comparative Perspectives*. King, S. & Winter, A. (eds.). New York: Berghahn, p. 228-249 22 p. (International Studies in Social History; vol. 23).

**Gated communities? Regulating migration in early modern cities**

De Munck, B. (ed.) & Winter, A. (ed.), 2012, Farnham/Burlington: Ashgate. 308 p.

**Profit and Loss: The Current Relevance of Historical Migration Research**

Winter, A., 2012, In : BMGN - Low Countries Historical Review. 127, p. 68-73 6 p.

**Regulating migration in early modern cities: An introduction**

De Munck, B. & Winter, A., 2012, *Gated communities? Regulating migration in early modern cities*. Munck, B. D. & Winter, A. (eds.). Ashgate, p. 1-24 25 p.

**Regulating urban migration and relief entitlements in eighteenth-century Brabant**

Winter, A., 2012, *Gated communities? Regulating migration in early modern cities*. Munck, B. D. & Winter, A. (eds.). Ashgate, p. 175-196 22 p.

**Travailleurs migrants ou pauvres étrangers? Politiques de migration dans les villes du Brabant au 18e siècle**

Winter, A., 2012, In : Cahiers Bruxellois. 43, p. 107-124 18 p.

**Eigen armen eerst? Migranten en de toegang tot armenzorg in Antwerpen, ca. 1840-1900**

Winter, A., 1 Jun 2011, *Werken aan de stad: Stedelijke actoren en structuren in de Zuidelijke Nederlanden, 1500-1900*. Koster, M. D., Munck, B. D., Greefs, H., Willems, B. & Winter, A. (eds.). VUBPRESS, p. 135-156 20 p.

**Inleiding**

De Koster, M., De Munck, B., Greefs, H., Willems, B. & Winter, A., 1 Jun 2011, *Werken aan de stad: Stedelijke actoren en structuren in de Zuidelijke Nederlanden, 1500-1900*. Koster, M. D., Munck, B. D., Greefs, H., Willems, B. & Winter, A. (eds.). VUBPRESS, p. 9-18 10 p.

**Politieoptredens en het dagelijks ordenen van de stad. Antwerpen, eind negentiende - begin twintigste eeuw**

De Koster, M., De Koster, M. (ed.), De Munck, B. (ed.), Greefs, H. (ed.), Willems, B. (ed.) & Winter, A. (ed.), 1 Jun 2011, *Werken aan de stad. Stedelijke actoren en structuren in de Zuidelijke Nederlanden, 1500-1900*. Brussel: VUBPRESS, p. 236-253 18 p. (Stadsschriften).

**Werken aan de stad: Stedelijke actoren en structuren in de Zuidelijke Nederlanden, 1500-1900. Liber alumnorum Catharina Lis en Hugo Soly.**

De Koster, M. (ed.), De Munck, B. (ed.), Greefs, H. (ed.), Bart, W. (ed.) & Winter, A. (ed.), 1 Jun 2011, VUBPRESS. 335 p. (Stadsschriften)

**Changer de place. Occupations, réseaux et carrières des immigrants à Anvers au XVIIIe siècle**

Winter, A., 2011, In : Mélanges de l'École française de Rome. Italie et Méditerranée. 123, p. 57-72 16 p.

**Poorten en papieren. Diversiteit en integratie in historisch perspectief**

De Munck, B., Greefs, H. & Winter, A., 14 Jun 2010, *Antwerpen: Biografie van een stad*. Bertels, I., Munck, B. D. & Goethem, H. V. (eds.). Meulenhoff/Manteau, p. 211-244 44 p.

**Abandoned in Brussels, Delivered in Paris: Long-Distance Transports of Unwanted Children in the Eighteenth Century**

Winter, A., 2010, In : *Journal of Family History*. 35, 2, p. 232-248 17 p.

**Armut und Migration: Lokale und nationale Antworten in Westeuropa, 1700-1900**

Winter, A., 2010, *Armut in Europa 1500-2000 (Querschnitte - Einführungsstexte zur Sozial-, Wirtschafts- und Kulturgeschichte, Band 25)*. Hahn, S., Lobner, N. & Sedmak, C. (eds.). Studienverlag (Innsbruck, Wien, Bozen), p. 35-56 21 p.

**Migrants and Urban Change: Newcomers to Antwerp, 1760-1860**

Winter, A., Gestrich, A. (ed.), King, S. (ed.) & Wright, R. E. (ed.), Apr 2009, Pickering & Chatto Publishers (London). 328 p. (Perspectives in Economic and Social History)

**Het dorp in de stad? Plattelandsvlucht, verstedelijking en migratienetwerken in de lange negentiende eeuw: een verkenning aan de hand van de casus Antwerpen**

Winter, A., 2009, In : *Ons Heem*. 62, p. 56-64 8 p.

**Migratiebeleid en economische verandering: Nieuwkomers en armenzorg in Antwerpen, 1750-1900**

Winter, A., 2009, In : *Noordbrabants Historisch Jaarboek*. 26, p. 99-128 29 p.

**Caught between Law and Practice: Migrants and Settlement Legislation in the Southern Low Countries in a Comparative Perspective, c. 1700–1900**

Winter, A., 2008, In : *Rural History*. 19, p. 137-162 26 p.

**Patterns of migration and adaptation in the urban transition: Newcomers to Antwerp, c. 1760-1860**

Winter, A., 2008, In : *Belgisch Tijdschrift voor Nieuwste Geschiedenis*. 38, p. 467-473 7 p.

**Patterns of migration and adaptation in the urban transition: Newcomers to Antwerp, c. 1760-1860**

Winter, A., 2007, (Unpublished) Unpublished PhD. 462 p.

**Patterns of Migration and Adaptation in the Urban Transition: Newcomers to Antwerp, 1760-1860**

Winter, A., 2007, Brussels.

**Recensie van Jean-Pierre Gutton, *Pauvreté, cultures et ordre social* : Recueil d'articles**

Winter, A., 2007, In : *Revue Belge de Philologie et d'Histoire*. 85, p. 440-442 3 p.

**Recensie van Leo Lucassen, David Feldman en Jochen Oltmer (eds.), *Paths of integration: Migrants in Western Europe (1880-2004)*, Amsterdam: Amsterdam University Press, 2006, 343 p.**

Winter, A., 2007, In : *Tijdschrift voor Sociale en Economische Geschiedenis*. 4, p. 187-190 3 p.

**De microcontext van verstedelijking: Posities en trajecten van immigranten op de Antwerpse arbeidsmarkt in de tweede helft van de achttiende eeuw**

Winter, A., 10 Nov 2006, In : *Stadsgeschiedenis (Hilversum)*. 1, p. 122-147 26 p.

**Divided interests, divided migrants. The rationales of policies regarding labour mobility in Western Europe, c. 1550-1914**

Winter, A., 2005, *Global Economic History Network (GEHN) Working Paper No. 15*. London School of Economics, 61 p. (Global Economic History Network (GEHN) Working Paper No. 15).

**"Vagrancy" as an Adaptive Strategy: The Duchy of Brabant, 1767-1776**

Winter, A., 2004, In : *International Review of Social History*. 49, p. 249-278 30 p.

**Over racistisch progressisme en verdraagzaam conservatisme. Individualisme langs de nieuwe politieke breuklijn**  
Winter, A., 2002, In : Samenleving en Politiek. 9, p. 46-50 5 p.

**Ongewenste kinderen op transport naar het Parijse vondelingenhuis. Een opmerkelijke transportonderneming vanuit Brussel in het derde kwart van de achttiende eeuw**  
Winter, A., 2001, *Tussen dader en slachtoffer: Jongeren en criminaliteit in historisch perspectief*. Lis, C. & Soly, H. (eds.). Brussel: VUBPRESS, p. 169-194 26 p.

## Activities

### **Migranten maken de stad. Migratie, diversiteit en conflict in historisch perspectief**

Anne Winter (Invited speaker)

4 Feb 2019

### **Migratie, belonging en beleid in de Zuidelijke Nederlanden / België, c. 1780-1914**

Anne Winter (Invited speaker)

14 Dec 2018

### **Beroepsstructuur en ambachtswezen in achttiende-eeuwse Brabantse en Vlaamse steden: Een verkenning**

Anne Winter (Speaker), Wouter Ryckbosch (Speaker)

30 Nov 2018

### **Geschiedenis van migratie en migratiebeleid: België als eenheid van analyse**

Anne Winter (Invited speaker)

23 Oct 2018

### **Places of Arrival and Spatial Settlement Patterns of Foreign Newcomers in Antwerp during the Second Half of the Nineteenth Century**

Hilde Greefs (Speaker), Anne Winter (Speaker)

31 Aug 2018

### **Poor migrants between belonging and expulsion: Dealing with 'foreigners' in urban relief and migration policies in Antwerp, c. 1830-1880**

Ellen Debackere (Speaker), Anne Winter (Speaker)

30 Aug 2018

### **Mobilities and belonging: migrants, social policies and local communities in Western Europe, c. 16th-19th c**

Anne Winter (Invited speaker)

8 Jun 2018

### **Non-nationals between belonging and expulsion: Cities and 'foreigners' in the formative years of the Belgian Kingdom, c. 1830-1880**

Anne Winter (Invited speaker)

27 Apr 2018

### **TRAJECTORIES AND FLOWS DURING THE 'MOBILITY TRANSITION': SPATIAL RECRUITMENT PATTERNS OF FOREIGN NEWCOMERS TO ANTWERP, 1850-1880**

Anne Winter (Speaker), Hilde Greefs (Speaker)

6 Apr 2018

### **The Determinants of Poor Relief in Early Modern Rural Societies: Western Flanders c. 1700**

Anne Winter (Speaker), Thijs Lambrecht (Speaker)

5 Apr 2018

**Taskforce Scholengroep Brussel / HARP (External organisation)**

Gustaaf Cornelis (Member), Anne Winter (Chair), Rik Vosters (Member), Karin Nys (Member)  
2018 → ...

**Meeting FWO WOG Urban Agency**

Anne Winter (Participant)  
15 Dec 2017

**Migration and diversity in historical perspective**

Anne Winter (Speaker)  
14 Dec 2017

**De handen ineen geslagen. Wat hebben historici en sociale wetenschappers op het terrein van de migratiestudies aan elkaar?**

Anne Winter (Chair)  
8 Dec 2017

**Relevantie analytische gereedschappen en theoretische debatten (vanuit sociale wetenschap) voor historici**

Anne Winter (Invited speaker)  
8 Dec 2017

**Port cities as nodes in migration trajectories: Spatial recruitment patterns of foreign newcomers to Antwerp, 1850-1880**

Anne Winter (Speaker), Hilde Greefs (Speaker)  
24 Nov 2017

**Aniek X. Smit**

Anne Winter (Host)  
1 Oct 2017 → 31 Dec 2017

**Between belonging and expulsion: Cities and migrants in the Southern Low Countries c. 1700-1900**

Anne Winter (Speaker)  
16 Jun 2017

**BMGN - Low Countries Historical Review (Journal)**

Anne Winter (Editor)  
2017 → ...

**Persistence and Transition: Municipal Migration Levels in the Provinces of Flanders and Antwerp, 1796-1846**

Anne Winter (Speaker), Nick Deschacht (Speaker)  
23 Sep 2016

**The geography of arrival: Spatial settlement patterns of foreign newcomers in Antwerp during the second half of the nineteenth century**

Anne Winter (Speaker), Hilde Greefs (Speaker)  
22 Sep 2016

**Trajectories and flows during the 'mobility transition': Spatial recruitment patterns of foreign newcomers to Antwerp, 1850-1880**

Anne Winter (Speaker), Hilde Greefs (Speaker)  
16 Sep 2016

**Welfare and demography in the time of Malthus: Exploring local variations in poor relief and population growth in the Southern Low Countries, c. 1750- c. 1810**

Anne Winter (Speaker), Thijs Lambrecht (Speaker)

16 Sep 2016

**13th International Conference on Urban History**

Anne Winter (Organiser)

26 Aug 2016

**Outcast or Embraced? Clusters of Foreign Immigrants in Belgium, c. 1840-1890. IMMIBEL: Background to the project**

Anne Winter (Speaker)

29 Apr 2016

**Persistence and Transition: Municipal Migration Levels in the Provinces of Flanders and Antwerp, 1796-1846**

Anne Winter (Speaker), Nick Deschacht (Speaker)

2 Apr 2016

**Preindustrial welfare between regional economies and local regimes: Rural poor relief in Flanders around 1800.**

Nick Van Den Broeck (Speaker), Anne Winter (Speaker)

2 Apr 2016

**Preindustrial welfare between regional economies and local regimes: Rural poor relief in Flanders around 1800**

Nick Van Den Broeck (Speaker), Anne Winter (Speaker), Thijs Lambrecht (Speaker)

7 Mar 2016

**Crime and Gender 1600-1900: Comparative Perspectives**

Anne Winter (Chair)

27 Nov 2015

**De onvermoede effecten van tijdelijke migratie en de januskop van het beleid**

Anne Winter (Chair)

30 Oct 2015

**MIGRATION POLICIES AND THE MATERIALITY OF IDENTIFICATION IN EUROPEAN CITIES, 1500-2000**

Anne Winter (Organiser)

28 May 2015 → 29 May 2015

**Migranten maken de stad. Migratie, diversiteit en conflict in historisch perspectief**

Anne Winter (Speaker)

21 Mar 2015

**International Institute of Social History (External organisation)**

Anne Winter (Member)

2015 → ...

**Poorten en papieren: Diversiteit en integratie in historisch perspectief**

Anne Winter (Speaker)

12 Dec 2014

**Identifying Newcomers: Urban Policies on Migration and Identification in Early Modern Europe**

Anne Winter (Speaker)

24 Nov 2014

**Migration networks in a globalizing world**

Anne Winter (Speaker)

14 Nov 2014

**12th International Conference on Urban History 'Cities in Europe, cities in the world'**

Anne Winter (Organiser)

3 Sep 2014

**Marginals and subalterns in Belgium. A historical perspective (19th and 20th centuries)**

Anne Winter (Chair)

2 Jul 2014

**10th European Social Science History Conference**

Anne Winter (Chair)

24 Apr 2014

**Dissociating poor relief from residence: the eighteenth-century Low Countries in a comparative perspective**

Anne Winter (Speaker)

8 Jan 2014

**Oxford Seminar on Social and Economic History**

Anne Winter (Speaker), Thijs Lambrecht (Speaker)

12 Nov 2013

**Poor relief and taxation in the Southern Low Countries in the second half of the eighteenth century: a regional example**

Anne Winter (Speaker), Thijs Lambrecht (Speaker)

20 Aug 2013

**Gender differentiations in trajectories and connections. Migration patterns of single men and women moving to Antwerp, 1850-1880**

Anne Winter (Speaker), Hilde Greefs (Speaker)

19 Apr 2013

**Gender differentiations in trajectories and connections. Migration patterns of single men and women moving to Antwerp, 1850-1880**

Anne Winter (Speaker), Hilde Greefs (Speaker)

7 Mar 2013

**Master Class on Migration & Integration Research with Prof. Dr. Godfried Engbersen**

Anne Winter (Organiser)

28 Jan 2010

**Master Class on Migration and Integration with Godfried Engbersen**

Anne Winter (Organiser)

28 Jan 2010

**Regards croisés sur les recherches actuelles en histoire urbaine: France, Belgique, Pays-Bas, fin 15e – début 19e siècles**

Anne Winter (Speaker)

28 Jan 2010 → 29 Jan 2010

**Low Countries Journal of Social and Economic History (Journal)**

Anne Winter (Editor)

2010 → 2016

**Ringvorlesung: Armut in Europa, 1500-1800**

Anne Winter (Speaker)

22 Oct 2009 → 23 Oct 2009



**Gastdocentschap (Erasmus)**

Anne Winter (Member)

19 Oct 2009 → 24 Oct 2009

**Van dorp tot stad: De relatie tussen stads- en plattelandsmentaliteit**

Anne Winter (Keynote speaker)

3 Oct 2009

**Les politiques locales d'immigration en Belgique dans une perspective comparative, 1700-1900**

Anne Winter (Member)

1 Oct 2009 → 31 Mar 2010

**Regulating Migration in Early Modern Cities**

Anne Winter (Speaker)

4 Sep 2009 → 5 Sep 2009

**Regulating Migration in Early Modern Cities**

Anne Winter (Organiser)

4 Sep 2009 → 5 Sep 2009

**Regulating Migration in Early Modern Cities**

Anne Winter (Keynote speaker)

4 Sep 2009 → 5 Sep 2009

**Workshop of the UAB Brussels Stadsplatform on Migration and Integration**

Anne Winter (Organiser)

17 Jun 2009

**Economic History Conference**

Anne Winter (Participant)

3 Apr 2009 → 5 Apr 2009

**Urban History Group Conference**

Anne Winter (Speaker)

2 Apr 2009 → 3 Apr 2009

**Graduate Seminar in History 1680-1850**

Anne Winter (Keynote speaker)

5 Feb 2009

**Graduate Workshop in Economic and Social History**

Anne Winter (Keynote speaker)

22 Jan 2009

**Seminars of the Cambridge Group for the History of Population and Social Structure**

Anne Winter (Keynote speaker)

19 Jan 2009

**Cultures of Institutional Welfare Workshop**

Anne Winter (Participant)

5 Dec 2008

**Seminar in English Local History**

Anne Winter (Keynote speaker)  
20 Nov 2008

**Medicine and the Workhouse Seminar**

Anne Winter (Participant)  
31 Oct 2008 → 1 Nov 2008

**XVde colloquium "De Brabantse Stad" over "Mobiliteit en integratie: De Brabantse steden en migratie"**

Anne Winter (Keynote speaker)  
17 Oct 2008 → 18 Oct 2008

**Nationalism and the Reshaping of Urban Communities in Europe, 1848-1914**

Anne Winter (Participant)  
26 Sep 2008 → 27 Sep 2008

**Migration policies & poor relief policies in early modern and early industrial England & Wales and in the Low Countries**

Anne Winter (Member)  
1 Sep 2008 → 28 Feb 2009

**IXth International Conference on Urban History**

Anne Winter (Organiser)  
27 Aug 2008 → 30 Aug 2008

**IXth International Conference on Urban History**

Anne Winter (Speaker)  
27 Aug 2008 → 30 Aug 2008

**Tussen markt en moraal: Bevolkingskwesties in de Lage Landen tijdens het Interbellum**

Anne Winter (Participant)  
29 May 2008

**Doctoraatsseminarie KULeuven - Departement Sociologie**

Anne Winter (Invited speaker)  
19 May 2008

**Migratie naar Europese steden in de Nieuwe Tijd Oorzaken, patronen en gevolgen**

Anne Winter (Speaker)  
7 May 2008

**Masterclass Leslie Page Moch**

Anne Winter (Participant)  
11 Apr 2008

**Workshop 'De stadswijk als eenheid van beleid?'**

Anne Winter (Participant)  
10 Apr 2008

**Het grote uiteengroeien: Historische wortels van wereldongelijkheid**

Anne Winter (Speaker)  
10 Mar 2008

**7th European Social Science History Conference**

Anne Winter (Speaker)  
26 Feb 2008 → 1 Mar 2008

**Het grote uiteengroeien: Historische wortels van wereldongelijkheid**

Anne Winter (Speaker)  
29 Jan 2008

**Unknown (External organisation)**

Anne Winter (Member)  
2008 → ...

**Port cities and their hinterlands: Migration, trade and cultural exchange**

Anne Winter (Speaker)  
7 Dec 2007 → 8 Dec 2007

**Workshop "The occupation in historical research"**

Anne Winter (Participant)  
29 Nov 2007 → 30 Nov 2007

**Onderzoek naar migratie in de lange negentiende eeuw**

Anne Winter (Keynote speaker)  
19 Nov 2007

**Narratives of poverty: English pauper letters 1780-1840 in comparative perspective**

Anne Winter (Speaker)  
4 Oct 2007 → 7 Oct 2007

**Het publieke van de openbare ruimte. Diversiteit en pluraliteit in de stedelijke publieke ruimte**

Anne Winter (Participant)  
8 Jun 2007

**Le travail entre campagnes et villes : Inégalités, concurrence, régulation (XVIIIe-XXe s.)**

Anne Winter (Speaker)  
14 May 2007

**Masterclass international and global economic history**

Anne Winter (Participant)  
11 May 2007

**The heuristic qualities and deficiencies of world systems theory for students of global economic history**

Anne Winter (Participant)  
10 May 2007

**Cosmologies for the Generation of Useful and Reliable Knowledge in Western Europe and China from the Accession of the Ming to the First Opium War (1368-1839)**

Anne Winter (Participant)  
9 May 2007

**De geleefde stad**

Anne Winter (Speaker)  
20 Apr 2007

**Workshop 'De geleefde stad'**

Anne Winter (Speaker)  
20 Apr 2007

**Workshop 'De gebouwde stad'**

Anne Winter (Participant)  
8 Mar 2007

**Studiedag Gender en Migratie**

Anne Winter (Speaker)  
15 Dec 2006

**Cosmopolis Studiedag: Stad(s)maken - Faire Ville(s) - Making Cities: Transparantie voor een onderzoeksgroep**

Anne Winter (Participant)  
23 Jun 2006

**6th European Social Science History Conference**

Anne Winter (Organiser)  
22 Mar 2006 → 25 Mar 2006

**Dag van de Nieuwste Geschiedenis**

Anne Winter (Organiser)  
18 Mar 2006

**NW Posthumus AIO-conferentie**

Anne Winter (Speaker)  
28 Apr 2005

**PIPA-workshop**

Anne Winter (Keynote speaker)  
27 Apr 2005

**WORK - Vorsersdag**

Anne Winter (Organiser)  
7 Feb 2005

**Namiddaglezingen-cyclus**

Anne Winter (Speaker)  
25 Jan 2005

**Rotterdam van binnen en van buiten: Demografische en sociale ontwikkelingen in Rotterdam in de 19de en 20ste eeuw**

Anne Winter (Organiser)  
21 Jan 2005

**First Flemish-Dutch Conference 'Economic History of the Low Countries before 1850'**

Anne Winter (Organiser)  
18 Nov 2004 → 19 Nov 2004

**15th Annual Workshop of the Economic History Society Women's Committee: Migration in historical perspective**

Anne Winter (Organiser)  
12 Nov 2004 → 13 Nov 2004

**5th European Social Science History Conference**

Anne Winter (Speaker)  
24 Mar 2004 → 27 Mar 2004

### **ESTER Research Design Course**

Anne Winter (Speaker)  
9 Nov 2003 → 12 Nov 2003

### **NW Posthumus Seminarie 2: Work in Progress, Rijksuniversiteit Groningen**

Anne Winter (Speaker)  
26 May 2003 → 28 May 2003

### **NW Posthumus Seminarie I: Een historiografische inleiding, Katholieke Universiteit Nijmegen**

Anne Winter (Speaker)  
17 Mar 2003 → 19 Mar 2003

## **Prizes**

### **Francqui Research Professor**

Anne Winter (Recipient), 2012

### **Prijs Professor Dr. R. de Bock-Doehaerd**

Anne Winter (Recipient), 2002

### **Prize I. Vanderschueren**

Anne Winter (Recipient), 2010

### **Prize of the Vlaamse Wetenschappelijke Stichting for the Human Sciences**

Anne Winter (Recipient), 2011

## **Projects**

### **OZRSAB3: The regulation of mobility, labour and poor relief in European social policy, c. 1350-1914**

Winter, A.  
1/10/20 → 30/09/22

### **OZR3601: Bilateral cooperation within the framework of a joint doctoral project: benchfee for joint PhD VUB - UGent, HELSEN Lore**

Winter, A.  
10/01/20 → 9/01/24

### **FWOTM965: Policing mobility. Daily interactions between the Brussels police and 'marginal migrants', c. 1880-1914.**

Winter, A., De Koster, M. & Erkul, A.  
1/11/19 → 31/10/21

### **FOD79: BELMIHISS: Belgian Migration History for Secondary Schools**

Winter, A.  
1/04/19 → 15/06/21

### **SRP58: SRP-Onderzoekszwaartepunt: Inequality, Migration and Social Relations in Urban Brabant and Flanders, c. 1350-1914**

Winter, A., Ryckbosch, W. & Deneweth, H.  
1/03/19 → 29/02/24

### **OZR3297: Watching the migrants. Police and migration in Brussels, c. 1914.**

Winter, A. & Erkul, A.  
1/10/18 → 30/09/19

**OZR3254: Cofinancing OZR FWO Hercules Equipment: DH-CoDe - Digital Historical Collection of Court Depositions from the Southern Low Countries (18th-19th centuries).**

Ryckbosch, W., Winter, A., Vosters, R., Vandebussche, W., De Koster, M., Christiaens, J., Vrints, A., Verbruggen, C. & Martens, G.

1/05/18 → 30/04/23

**IRP13: Interdisciplinary Research Program: Cities and Newcomers: Arrival infrastructure, multi-scalar statehood and professional intermediaries**

Winter, A., van Heur, B., De Melo Melgaço, L., Verhaeghe, P., Corijn, E., Deboosere, P., Enhus, E. & Schuermans, N.

1/04/18 → 31/03/23

**OZR3215: Bilateral cooperation within the framework of a joint doctoral project: Bench Fee for Joint PhD, VUB - UGent, Van den Broeck Nick**

Winter, A. & Van den Broeck, N.

15/12/17 → 31/12/21

**FWOTM870: Surviving old age: coping strategies of the elderly labouring poor in Gent, Brussels and Antwerp, 1750-1850.**

Winter, A. & Verbeke, A.

1/10/17 → 30/09/21

**OZR3186: Bilateral cooperation for joint PhD project: Bench Fee for Joint PhD VUB-UA, Loockx Kristof**

Winter, A. & Loockx, K.

29/08/17 → 31/12/21

**OZR3187: Bilateral cooperation for joint PhD project: Bench Fee for Joint PhD VUB-UA, Verbruggen Thomas**

Winter, A. & Verbruggen, T.

29/08/17 → 31/12/21

**OZR2988: Tussen afhankelijkheid en agency. De overlevingsbasis van bejaarde armen in Antwerpen en Brussel: 1750-1850.**

Winter, A. & Verbeke, A.

1/10/16 → 30/09/17

**OZR3350: Bilateral cooperation within the framework of a joint doctoral project: benchfee for joint PhD VUB - UGent- BAGUET JELTEN**

Winter, A.

17/12/15 → 16/12/19

**OZR2906: Bilaterale samenwerking ikv gemeenschappelijk doctoraatsproject: Bench Fee voor Joint PhD VUB-UGent, Schepers Josepha Jantina**

Winter, A. & Schepers, M.

1/01/15 → 1/01/19

**FWOAL754: Paying for deservingness? Poor relief administration, entitlement and local economies in the Southern Low Countries, 1750-1830**

Winter, A., Lambrecht, T. & Van den Broeck, N.

1/01/15 → 31/12/18

**FOD6: IMMIBEL: Outcast or Embraced? Clusters of Foreign Immigrants in Belgium, c. 1840-1890.**

Winter, A., Feys, T. & Loockx, K.

15/12/14 → 15/03/19

**FWOTM742: Gentrification, migration, and conflicts about neighbourhood development and transformation: a historically comparative approach.**

Wauters, R., van Heur, B. & Winter, A.

1/10/14 → 30/09/19

**FWOTM714: The transformation of urban political elites. The case of sixteenth-century Ghent.**

Buylaert, F., Baguet, J., Van Bruaene, A. & Winter, A.

1/10/14 → 30/09/18

**HERC29: STREAM - A spatiotemporal research infrastructure for Early Modern Flanders and Brabant**

Winter, A., Devos, I. & Plettinck, G.

1/06/14 → 31/05/19

**SRP27: SRP (Groeiers): The cradle of modernity? Social dynamics in the cities of Brabant and Flanders in a comparative and long-term perspective, 1350-1914**

Winter, A., Buylaert, F., Baguet, J., De Koster, M., Ryckbosch, W., Van den Broeck, N., Verbeke, A., Feys, T., Deneweth, H., Horemans, B., Plettinck, G., Adriaens, M., Wauters, R., Vermeesch, G., Vanruysseveldt, V., Vervaeke, A. A., Everaert, J., Erkul, A., Volkov, V., Coppens, A., Debackere, E., Verbruggen, T., Loockx, K., Beeckaert, E., Saelens, W., Leloup, W., Degraeve, M. & Schepers, M.

1/03/14 → 28/02/19

**OZR2590: Bilateral cooperation within the framework of joint doctoral projects\_Bench fee i.h.k. from Joint PhD VUB-University of Antwerp, Ellen Debackere.**

Winter, A. & Debackere, E.

1/01/14 → 31/12/14

**FWOAL733: Nobility, delights and state formation in the sixteenth-century Netherlands (case studies: Flanders and Brabant)**

Buylaert, F., Soen, V., Winter, A. & Adriaens, M.

1/01/14 → 31/12/17

**OZR2573: Bilateral cooperation in the framework of mutual doctoral projects: Bench fee for Joint PhD VUB-Universiteit Antwerpen, Alexander Coppens.**

Winter, A. & Coppens, A.

1/11/13 → 31/10/14

**FWOTM678: Contractors, master craftsmen, workers and merchants. Productionrelations in construction in Brussels, 1685-1789**

Winter, A. & Horemans, B.

1/10/13 → 19/12/17

**FWOTM701: Entrepreneurial strategies of building contractors. The case of Antwerp, 1490-1670**

Deneweth, H., Winter, A. & Bertels, I.

1/10/13 → 30/09/16

**IRP4: Cities and Newcomers: Regulating Neighbourhoods of Arrival in Periods of Urban Transition, 1880-1914 and 1980-2015**

Winter, A., Corijn, E., De Valk, H., Deboosere, P., Enhus, E. & van Heur, B.

1/04/13 → 31/03/18

**FWOTM632: Artists or Beggars? Itinerant Entertainers and Popular Culture in Brabant (1750-1914)**

Winter, A. & Vanruysseveldt, V.

1/10/12 → 30/09/16

**OZR2381: Ambachtsmeesters, bouwondernemers en openbare werken in Brussel (1600 -1795): een sociaal-economische benadering.**

Winter, A. & Horemans, B.

1/10/12 → 30/09/13

**ANI119: Mandaat Francqui Onderzoekshoogleraar toegekend aan Anne WINTER : Between belonging and removal: Inclusion/exclusion of migrants in West-European cities, 1450-1914**

Winter, A.

1/09/12 → 1/09/15

**DWTC278: City and Society in the Low Countries (ca. 1200-ca.1850). The condition urbaine: between resilience and vulnerability**

Winter, A., Deneweth, H., Blondé, B., Boone, M., Deligne, C., Aerts, E., Parmentier, I., Bracke, W. & Van Sprang, S.

1/04/12 → 30/09/17

**FWOTM590: Access to justice. Urban legal procedures and the usage of the pro bono procedure in civil adjudication in the Low Countries, 16th to 18th century.**

Winter, A. & Vermeesch, G.

1/10/11 → 30/09/18

**CONI332: Inschrijvingen: Huldeboek en de studiedag in het kader van het emeritaat van Prof. H. Soly.**

Winter, A.

2/02/11 → ...

**FWOAL577: Between local autonomy and national migration policy: the view regarding 'strangers' in Antwerp and Brussels, 1750-1914**

Winter, A., Coppens, A. & Greefs, H.

1/01/11 → 31/12/14

**CONO332: Huldeboek en de studiedag in het kader van het emeritaat van Prof. H. Soly.**

Winter, A.

3/09/10 → ...

**FWOTM521: Life trajectories on the edge: 'beggars' and 'vagabonds' in Belgian state benevolent colonies, 1890-1910.**

Winter, A., Lis, C. & Vercammen, R.

1/10/09 → 30/09/13

**OZR2014: Research alliance group VUB-UGent: Urban history -CITY**

Ryckbosch, W., Winter, A., Van Bruaene, A. & Winter, A.

30/09/09 → 31/12/24

**CONO284: conferentie: "Migrants, entitlements and welfare, 1500-2000: comparative perspectives." 6-7 september 2010**

Winter, A.

29/04/09 → ...

**CONI284: Inschrijvingen conferentie: "Migrants, entitlements and welfare, 1500-2000: comparative perspectives." 6-7 september 2010**

Winter, A.

29/04/09 → ...

**OZR1776: Local migration in antwerp, Ghent and Charleroi, 1700-1900.**

Winter, A.

1/01/09 → 31/12/09

**FWOTM453: Expel or subsidise? Local policies towards newcomers in the Southern Low Countries, c. 1700-1900**

Winter, A.

1/10/07 → 30/09/10



**FWOTM424: Two centuries of private charity in Antwerp: a study of generous donors and their environment, 1598-1795.**

Provoost, H., Winter, A. & Soly, H.

1/10/07 → 31/08/13

**OZR793: Subsistentiemigratie in de Belgische gebieden tijdens de transitie van preïndustriële naar industriële samenleving 1765-1848**

Soly, H. & Winter, A.

1/01/03 → 31/12/06

**FWOTM287: Subsistence migration in the Belgian regions during the transition from pre-industrial to industrial society, 1765-1848**

Soly, H. & Winter, A.

1/10/02 → 30/09/06