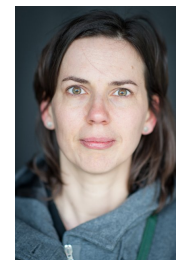


Anne Winter
Associate Professor of History
Historical Research into Urban Transformation Processes
Faculty of Arts



Postal address:
Pleinlaan 2
1050
Brussels
Belgium
Email: Anne.Winter@vub.be

Research output

Cities in Motion: Mobility, Migration Selectivity and Demographic Change in Belgian Cities, 1846-1910

Greefs, H. & Winter, A., 2020, *Inequality and the City in the Low Countries (1200-2020)*. Blondé, B., Geens, S., Greefs, H., Ryckbosch, W., Soens, T. & Stabel, P. (eds.). Brepols Publishers, p. 79-100 22 p. (Studies in European Urban History; vol. 50).

Foreign Female Sex Workers in an Atlantic Port City: Elite Prostitution in Late Nineteenth-Century Antwerp

Greefs, H. & Winter, A., 2020, *Migrants and the Making of the Urban-Maritime World: Agency and Mobility in Port Cities, c. 1570-1940*. Christina, R. & Martin, Ö. (eds.). Routledge, p. 195-221 26 p. (Routledge Advances in Urban History; vol. 8).

Introduction: Migration Policies and Materialities of Identification in European Cities: Papers and Gates, 1500-1930s

Greefs, H. & Winter, A., 2020, *Migration Policies and Materialities of Identification in European Cities: Papers and Gates, 1500-1930s*. Greefs, H. & Winter, A. (eds.). Abingdon: Routledge, p. 3-23 21 p.

Migration Policies and Materialities of Identification in European Cities: Papers and Gates, 1500-1930s

Greefs, H. (ed.) & Winter, A. (ed.), 2020, Abingdon: Routledge. 320 p. (Routledge Advances in Urban History; no. 2)

Welfare and demography in the time of Malthus. Regional and local variations in poor relief and population developments in Flanders, c. 1750-1810

Devos, I., Lambrecht, T. & Winter, A., 2020, *Disuguaglianza economica nelle società preindustriali: cause ed effetti / Economic inequality in pre-industrial societies: causes and effect*. Nigro, G. (ed.). Firenze: Firenze University Press, p. 327-350 (Datini Studies in Economic History).

FCC-hh: The Hadron Collider: Future Circular Collider Conceptual Design Report Volume 3

FCC Collaboration, Blekman, F. & Skovpen, K., 5 Jul 2019, 755 p.

FCC Physics Opportunities: Future Circular Collider Conceptual Design Report Volume 1

FCC Collaboration & Blekman, F., 5 Jun 2019, 161 p.

Micro-Mobility in Flux: Municipal Migration Levels in the Provinces of Flanders and Antwerp, 1796-1846

Winter, A. & Deschacht, N., 26 Apr 2019, In : Journal of Migration History. 5, 1, p. 1-30 30 p.

An old poor law on the Continent? Agrarian capitalism, poor taxes, and village conflict in eighteenth-century coastal Flanders

Lambrecht, T. & Winter, A., Nov 2018, In : Economic History Review. 71, 4, p. 1173-1198 26 p.

STREAM (Spatiotemporal Research Infrastructure for Early Modern Brabant and Flanders): Sources, Data and Methods

Devos, I., Torsten, W., Demey, R., Vrielinck, S., Lambrecht, T., De Maeyer, P., Ranson, E., Van den Berghe, M., Plettinck, G. & Winter, A., 1 Oct 2018, In : International Journal of Humanities and Arts Computing. 12, 2, p. 102-119 18 p.

Preindustrial welfare between regional economies and local regimes: Rural poor relief in Flanders around 1800

Van Den Broeck, N., Lambrecht, T. & Winter, A., Aug 2018, In : Continuity and Change. 33, 2, p. 255-284 30 p.

De humane stad.

Ryckewaert, M., Aernouts, N., Ballon, P., Boussauw, K., Coene, G., Corijn, E., Donders, K., Heylighen, F., Heyman, R., Keserü, I., Macharis, C., Mariën, I., Maus, M., Pinxten, R., Van Den Houte, K., Van Der Graaf, S., Van Meeteren, M., Vanderstraeten, L., Vanhaeght, A-S., Walravens, N. & 1 others, Winter, A., 2017, ASP / VUBPRESS. 270 p.

De vele gezichten van zorg: Armoede en armenzorg op het platteland in het graafschap Vlaanderen tijdens de achttiende eeuw'

Lambrecht, T. & Winter, A., 2017, In : Tijdschrift. Heemkunde en lokaal-erfgoedpraktijk in Vlaanderen. 7, 1, p. 45-57

Migratie maakt de stad. Een historisch perspectief op stad en migratie

Winter, A., 2017, *De humane stad*. Ballon, P., Macharis, C. & Ryckewaert, M. (eds.). Brussels: ASP / VUBPRESS, p. 159-175 17 p.

Migration, Settlement and Belonging in Europe, 1500-1930s: Comparative Perspectives

Winter, A. (ed.) & King, S. (ed.), 1 Mar 2016, Paperback ed. New York: Berghahn. 326 p.

Alone and Far from Home: Gender and Migration Trajectories of Single Foreign Newcomers to Antwerp, 1850-1880

Greefs, H. & Winter, A., 2016, In : Journal of Urban History. 42, 1, p. 61-80 20 p.

Een dwalend bestaan? Mobiliteit bij veroordeelde landlopers in België (1870-1914/30)

Vercammen, R. & Winter, A., 2016, In : Tijdschrift voor Sociale en Economische Geschiedenis. 13, 2, p. 51-75 25 p.

Rural crisis and rural exodus? Local migration dynamics during the crisis of the 1840s in Flanders (Belgium)

Deschacht, N. & Winter, A., 28 Apr 2015, In : Explorations in Economic History. 56, p. 32-52 21 p.

Migranten maken de stad. Migratie, diversiteit en conflict in historisch perspectief

Winter, A., 2015, Brussels: VUBPRESS. 55 p. (Paul Verbraeken Lezing)

Van ver gekomen? Migratieafstand, gender en sociale klasse bij buitenlandse nieuwkomers in Antwerpen tijdens de tweede helft van de negentiende eeuw

Greefs, H. & Winter, A., 2014, *Kwetsbare groepen in/en historische demografie*. Devos, I., Matthijs, K. & Putte, B. V. D. (eds.). Leuven: Acco, p. 155-169 15 p. (Jaarboek Historische Demografie; vol. 2014).

Migration, Settlement and Belonging in Europe, 1500–1930s: Comparative Perspectives

Winter, A. (ed.), King, S. (ed.) & Van Der Linden, M. (ed.), Nov 2013, New York: Berghahn. 326 p. (International Studies in Social History)

Circuits de migration vers un port en formation: Anvers, 1760-1860

Winter, A., 2013, In : Revue du Nord. 95, p. 124-165 42 p.

Introduction

Innes, J., King, S. & Winter, A., 2013, *Migration, Settlement and Belonging in Europe, 1500–1930s: Comparative Perspectives*. King, S. & Winter, A. (eds.). New York: Berghahn, p. 1-28 29 p. (International Studies in Social History; vol. 23).

Migration, Poor Relief and Local Autonomy: Settlement Policies in England and the Southern Low Countries in the Eighteenth Century

Winter, A. & Lambrecht, T., 2013, In : Past & Present. 218, p. 91-126 36 p.

Population and Migration: European and Chinese Experiences Compared

Winter, A., 2013, *The Oxford Handbook on Cities in World History*. Clark, P. (ed.). Oxford: Oxford University Press, p. 403-420 18 p. (Oxford Handbooks in History).

Settlement Law and Rural-Urban Relief Transfers in Nineteenth-Century Belgium: A Case Study on Migrants' Access to Relief in Antwerp

Winter, A., 2013, *Migration, Settlement and Belonging in Europe, 1500–1930s: Comparative Perspectives*. King, S. & Winter, A. (eds.). New York: Berghahn, p. 228-249 22 p. (International Studies in Social History; vol. 23).

Gated communities? Regulating migration in early modern cities

De Munck, B. (ed.) & Winter, A. (ed.), 2012, Farnham/Burlington: Ashgate. 308 p.

Profit and Loss: The Current Relevance of Historical Migration Research

Winter, A., 2012, In : *BMGN - Low Countries Historical Review*. 127, p. 68-73 6 p.

Regulating migration in early modern cities: An introduction

De Munck, B. & Winter, A., 2012, *Gated communities? Regulating migration in early modern cities*. Munck, B. D. & Winter, A. (eds.). Ashgate, p. 1-24 25 p.

Regulating urban migration and relief entitlements in eighteenth-century Brabant

Winter, A., 2012, *Gated communities? Regulating migration in early modern cities*. Munck, B. D. & Winter, A. (eds.). Ashgate, p. 175-196 22 p.

Travailleurs migrants ou pauvres étrangers? Politiques de migration dans les villes du Brabant au 18e siècle

Winter, A., 2012, In : *Cahiers Bruxellois*. 43, p. 107-124 18 p.

Eigen armen eerst? Migranten en de toegang tot armenzorg in Antwerpen, ca. 1840-1900

Winter, A., 1 Jun 2011, *Werken aan de stad: Stedelijke actoren en structuren in de Zuidelijke Nederlanden, 1500-1900*. Koster, M. D., Munck, B. D., Greefs, H., Willems, B. & Winter, A. (eds.). VUBPRESS, p. 135-156 20 p.

Inleiding

De Koster, M., De Munck, B., Greefs, H., Willems, B. & Winter, A., 1 Jun 2011, *Werken aan de stad: Stedelijke actoren en structuren in de Zuidelijke Nederlanden, 1500-1900*. Koster, M. D., Munck, B. D., Greefs, H., Willems, B. & Winter, A. (eds.). VUBPRESS, p. 9-18 10 p.

Politieoptredens en het dagelijks ordenen van de stad. Antwerpen, eind negentiende - begin twintigste eeuw

De Koster, M., De Koster, M. (ed.), De Munck, B. (ed.), Greefs, H. (ed.), Willems, B. (ed.) & Winter, A. (ed.), 1 Jun 2011, *Werken aan de stad. Stedelijke actoren en structuren in de Zuidelijke Nederlanden, 1500-1900*. Brussel: VUBPRESS, p. 236-253 18 p. (Stadsschriften).

Werken aan de stad: Stedelijke actoren en structuren in de Zuidelijke Nederlanden, 1500-1900. Liber alumnorum Catharina Lis en Hugo Soly.

De Koster, M. (ed.), De Munck, B. (ed.), Greefs, H. (ed.), Bart, W. (ed.) & Winter, A. (ed.), 1 Jun 2011, VUBPRESS. 335 p. (Stadsschriften)

Changer de place. Occupations, réseaux et carrières des immigrants à Anvers au XVIIIe siècle

Winter, A., 2011, In : *Mélanges de l'École française de Rome. Italie et Méditerranée*. 123, p. 57-72 16 p.

Poorten en papieren. Diversiteit en integratie in historisch perspectief

De Munck, B., Greefs, H. & Winter, A., 14 Jun 2010, *Antwerpen: Biografie van een stad*. Bertels, I., Munck, B. D. & Goethem, H. V. (eds.). Meulenhoff/Manteau, p. 211-244 44 p.

Abandoned in Brussels, Delivered in Paris: Long-Distance Transports of Unwanted Children in the Eighteenth Century

Winter, A., 2010, In : *Journal of Family History*. 35, 2, p. 232-248 17 p.

Armut und Migration: Lokale und nationale Antworten in Westeuropa, 1700-1900

Winter, A., 2010, *Armut in Europa 1500-2000 (Querschnitte - Einführungs- und Kulturgeschichte, Band 25)*. Hahn, S., Lobner, N. & Sedmak, C. (eds.). Studienverlag (Innsbruck, Wien, Bozen), p. 35-56

21 p.

Migrants and Urban Change: Newcomers to Antwerp, 1760-1860

Winter, A., Gestrich, A. (ed.), King, S. (ed.) & Wright, R. E. (ed.), Apr 2009, Pickering & Chatto Publishers (London). 328 p. (Perspectives in Economic and Social History)

Het dorp in de stad? Plattelandsvlucht, verstedelijking en migratienetwerken in de lange negentiende eeuw: een verkenning aan de hand van de casus Antwerpen

Winter, A., 2009, In : *Ons Heem*. 62, p. 56-64 8 p.

Migratiebeleid en economische verandering: Nieuwkomers en armenzorg in Antwerpen, 1750-1900

Winter, A., 2009, In : *Noordbrabants Historisch Jaarboek*. 26, p. 99-128 29 p.

Caught between Law and Practice: Migrants and Settlement Legislation in the Southern Low Countries in a Comparative Perspective, c. 1700–1900

Winter, A., 2008, In : *Rural History*. 19, p. 137-162 26 p.

Patterns of migration and adaptation in the urban transition: Newcomers to Antwerp, c. 1760-1860

Winter, A., 2008, In : *Belgisch Tijdschrift voor Nieuwste Geschiedenis*. 38, p. 467-473 7 p.

Patterns of migration and adaptation in the urban transition: Newcomers to Antwerp, c. 1760-1860

Winter, A., 2007, (Unpublished) Unpublished PhD. 462 p.

Recensie van Jean-Pierre Gutton, *Pauvreté, cultures et ordre social : Recueil d'articles*

Winter, A., 2007, In : *Revue Belge de Philologie et d'Histoire*. 85, p. 440-442 3 p.

Recensie van Leo Lucassen, David Feldman en Jochen Oltmer (eds.), *Paths of integration: Migrants in Western Europe (1880-2004)*, Amsterdam: Amsterdam University Press, 2006, 343 p.

Winter, A., 2007, In : *Tijdschrift voor Sociale en Economische Geschiedenis*. 4, p. 187-190 3 p.

De microcontext van verstedelijking: Posities en trajecten van immigranten op de Antwerpse arbeidsmarkt in de tweede helft van de achttiende eeuw

Winter, A., 10 Nov 2006, In : *Stadsgeschiedenis (Hilversum)*. 1, p. 122-147 26 p.

Divided interests, divided migrants. The rationales of policies regarding labour mobility in Western Europe, c. 1550-1914

Winter, A., 2005, *Global Economic History Network (GEHN) Working Paper No. 15*. London School of Economics, 61 p. (Global Economic History Network (GEHN) Working Paper No. 15).

"Vagrancy" as an Adaptive Strategy: The Duchy of Brabant, 1767-1776

Winter, A., 2004, In : *International Review of Social History*. 49, p. 249-278 30 p.

Over racistisch progressisme en verdraagzaam conservatisme. Individualisme langs de nieuwe politieke breuklijn

Winter, A., 2002, In : *Samenleving en Politiek*. 9, p. 46-50 5 p.

Ongewenste kinderen op transport naar het Parijse vondelingenhuis. Een opmerkelijke transportonderneming vanuit Brussel in het derde kwart van de achttiende eeuw

Winter, A., 2001, *Tussen dader en slachtoffer: Jongeren en criminaliteit in historisch perspectief*. Lis, C. & Soly, H. (eds.). Brussel: VUBPRESS, p. 169-194 26 p.

Activities

Migranten maken de stad. Migratie, diversiteit en conflict in historisch perspectief

Anne Winter (Invited speaker)

4 Feb 2019

Migratie, belonging en beleid in de Zuidelijke Nederlanden / België, c. 1780-1914

Anne Winter (Invited speaker)

14 Dec 2018

Beroepsstructuur en ambachtswezen in achttiende-eeuwse Brabantse en Vlaamse steden: Een verkenning

Anne Winter (Speaker), Wouter Ryckbosch (Speaker)

30 Nov 2018

Geschiedenis van migratie en migratiebeleid: België als eenheid van analyse

Anne Winter (Invited speaker)

23 Oct 2018

Places of Arrival and Spatial Settlement Patterns of Foreign Newcomers in Antwerp during the Second Half of the Nineteenth Century

Hilde Greefs (Speaker), Anne Winter (Speaker)

31 Aug 2018

Poor migrants between belonging and expulsion: Dealing with 'foreigners' in urban relief and migration policies in Antwerp, c. 1830-1880

Ellen Debackere (Speaker), Anne Winter (Speaker)

30 Aug 2018

Mobilities and belonging: migrants, social policies and local communities in Western Europe, c. 16th-19th c

Anne Winter (Invited speaker)

8 Jun 2018

Non-nationals between belonging and expulsion: Cities and 'foreigners' in the formative years of the Belgian Kingdom, c. 1830-1880

Anne Winter (Invited speaker)

27 Apr 2018

TRAJECTORIES AND FLOWS DURING THE 'MOBILITY TRANSITION': SPATIAL RECRUITMENT PATTERNS OF FOREIGN NEWCOMERS TO ANTWERP, 1850-1880

Anne Winter (Speaker), Hilde Greefs (Speaker)

6 Apr 2018

The Determinants of Poor Relief in Early Modern Rural Societies: Western Flanders c. 1700

Anne Winter (Speaker), Thijs Lambrecht (Speaker)

5 Apr 2018

Taskforce Scholengroep Brussel / HARP (External organisation)

Gustaaf Cornelis (Member), Anne Winter (Chair), Rik Vosters (Member), Karin Nys (Member)

2018 → ...

Meeting FWO WOG Urban Agency

Anne Winter (Participant)

15 Dec 2017

Migration and diversity in historical perspective

Anne Winter (Speaker)

14 Dec 2017

De handen ineen geslagen. Wat hebben historici en sociale wetenschappers op het terrein van de migratiestudies aan elkaar?

Anne Winter (Chair)
8 Dec 2017

Relevantie analytische gereedschappen en theoretische debatten (vanuit sociale wetenschap) voor historici

Anne Winter (Invited speaker)
8 Dec 2017

Port cities as nodes in migration trajectories: Spatial recruitment patterns of foreign newcomers to Antwerp, 1850-1880

Anne Winter (Speaker), Hilde Greefs (Speaker)
24 Nov 2017

Aniek X. Smit

Anne Winter (Host)
1 Oct 2017 → 31 Dec 2017

Between belonging and expulsion: Cities and migrants in the Southern Low Countries c. 1700-1900

Anne Winter (Speaker)
16 Jun 2017

BMGN - Low Countries Historical Review (Journal)

Anne Winter (Editor)
2017 → ...

Persistence and Transition: Municipal Migration Levels in the Provinces of Flanders and Antwerp, 1796-1846

Anne Winter (Speaker), Nick Deschacht (Speaker)
23 Sep 2016

The geography of arrival: Spatial settlement patterns of foreign newcomers in Antwerp during the second half of the nineteenth century

Anne Winter (Speaker), Hilde Greefs (Speaker)
22 Sep 2016

Trajectories and flows during the 'mobility transition': Spatial recruitment patterns of foreign newcomers to Antwerp, 1850-1880

Anne Winter (Speaker), Hilde Greefs (Speaker)
16 Sep 2016

Welfare and demography in the time of Malthus: Exploring local variations in poor relief and population growth in the Southern Low Countries, c. 1750- c. 1810

Anne Winter (Speaker), Thijs Lambrecht (Speaker)
16 Sep 2016

13th International Conference on Urban History

Anne Winter (Organiser)
26 Aug 2016

Outcast or Embraced? Clusters of Foreign Immigrants in Belgium, c. 1840-1890. IMMIBEL: Background to the project

Anne Winter (Speaker)
29 Apr 2016

Persistence and Transition: Municipal Migration Levels in the Provinces of Flanders and Antwerp, 1796-1846

Anne Winter (Speaker), Nick Deschacht (Speaker)
2 Apr 2016

Preindustrial welfare between regional economies and local regimes: Rural poor relief in Flanders around 1800.
Nick Van Den Broeck (Speaker), Anne Winter (Speaker)
2 Apr 2016

Preindustrial welfare between regional economies and local regimes: Rural poor relief in Flanders around 1800
Nick Van Den Broeck (Speaker), Anne Winter (Speaker), Thijs Lambrecht (Speaker)
7 Mar 2016

Crime and Gender 1600-1900: Comparative Perspectives
Anne Winter (Chair)
27 Nov 2015

De onvermoede effecten van tijdelijke migratie en de januskop van het beleid
Anne Winter (Chair)
30 Oct 2015

MIGRATION POLICIES AND THE MATERIALITY OF IDENTIFICATION IN EUROPEAN CITIES, 1500-2000
Anne Winter (Organiser)
28 May 2015 → 29 May 2015

Migranten maken de stad. Migratie, diversiteit en conflict in historisch perspectief
Anne Winter (Speaker)
21 Mar 2015

International Institute of Social History (External organisation)
Anne Winter (Member)
2015 → ...

Poorten en papieren: Diversiteit en integratie in historisch perspectief
Anne Winter (Speaker)
12 Dec 2014

Identifying Newcomers: Urban Policies on Migration and Identification in Early Modern Europe
Anne Winter (Speaker)
24 Nov 2014

Migration networks in a globalizing world
Anne Winter (Speaker)
14 Nov 2014

12th International Conference on Urban History 'Cities in Europe, cities in the world'
Anne Winter (Organiser)
3 Sep 2014

Marginals and subalterns in Belgium. A historical perspective (19th and 20th centuries)
Anne Winter (Chair)
2 Jul 2014

10th European Social Science History Conference
Anne Winter (Chair)
24 Apr 2014

Dissociating poor relief from residence: the eighteenth-century Low Countries in a comparative perspective

Anne Winter (Speaker)

8 Jan 2014

Oxford Seminar on Social and Economic History

Anne Winter (Speaker), Thijs Lambrecht (Speaker)

12 Nov 2013

Poor relief and taxation in the Southern Low Countries in the second half of the eighteenth century: a regional example

Anne Winter (Speaker), Thijs Lambrecht (Speaker)

20 Aug 2013

Gender differentiations in trajectories and connections. Migration patterns of single men and women moving to Antwerp, 1850-1880

Anne Winter (Speaker), Hilde Greefs (Speaker)

19 Apr 2013

Gender differentiations in trajectories and connections. Migration patterns of single men and women moving to Antwerp, 1850-1880

Anne Winter (Speaker), Hilde Greefs (Speaker)

7 Mar 2013

Master Class on Migration & Integration Research with Prof. Dr. Godfried Engbersen

Anne Winter (Organiser)

28 Jan 2010

Master Class on Migration and Integration with Godfried Engbersen

Anne Winter (Organiser)

28 Jan 2010

Regards croisés sur les recherches actuelles en histoire urbaine: France, Belgique, Pays-Bas, fin 15e – début 19e siècles

Anne Winter (Speaker)

28 Jan 2010 → 29 Jan 2010

Low Countries Journal of Social and Economic History (Journal)

Anne Winter (Editor)

2010 → 2016

Ringvorlesung: Armut in Europa, 1500-1800

Anne Winter (Speaker)

22 Oct 2009 → 23 Oct 2009

Gastdocentschap (Erasmus)

Anne Winter (Member)

19 Oct 2009 → 24 Oct 2009

Van dorp tot stad: De relatie tussen stads- en plattelandsmentaliteit

Anne Winter (Keynote speaker)

3 Oct 2009

Les politiques locales d'immigration en Belgique dans une perspective comparative, 1700-1900

Anne Winter (Member)

1 Oct 2009 → 31 Mar 2010

Regulating Migration in Early Modern Cities

Anne Winter (Speaker)
4 Sep 2009 → 5 Sep 2009

Regulating Migration in Early Modern Cities

Anne Winter (Organiser)
4 Sep 2009 → 5 Sep 2009

Regulating Migration in Early Modern Cities

Anne Winter (Keynote speaker)
4 Sep 2009 → 5 Sep 2009

Workshop of the UAB Brussels Stadsplatform on Migration and Integration

Anne Winter (Organiser)
17 Jun 2009

Economic History Conference

Anne Winter (Participant)
3 Apr 2009 → 5 Apr 2009

Urban History Group Conference

Anne Winter (Speaker)
2 Apr 2009 → 3 Apr 2009

Graduate Seminar in History 1680-1850

Anne Winter (Keynote speaker)
5 Feb 2009

Graduate Workshop in Economic and Social History

Anne Winter (Keynote speaker)
22 Jan 2009

Seminars of the Cambridge Group for the History of Population and Social Structure

Anne Winter (Keynote speaker)
19 Jan 2009

Cultures of Institutional Welfare Workshop

Anne Winter (Participant)
5 Dec 2008

Seminar in English Local History

Anne Winter (Keynote speaker)
20 Nov 2008

Medicine and the Workhouse Seminar

Anne Winter (Participant)
31 Oct 2008 → 1 Nov 2008

XVde colloquium "De Brabantse Stad" over "Mobiliteit en integratie: De Brabantse steden en migratie"

Anne Winter (Keynote speaker)
17 Oct 2008 → 18 Oct 2008

Nationalism and the Reshaping of Urban Communities in Europe, 1848-1914

Anne Winter (Participant)
26 Sep 2008 → 27 Sep 2008

Migration policies & poor relief policies in early modern and early industrial England & Wales and in the Low Countries

Anne Winter (Member)

1 Sep 2008 → 28 Feb 2009

IXth International Conference on Urban History

Anne Winter (Speaker)

27 Aug 2008 → 30 Aug 2008

IXth International Conference on Urban History

Anne Winter (Organiser)

27 Aug 2008 → 30 Aug 2008

Tussen markt en moraal: Bevolgingskwesties in de Lage Landen tijdens het Interbellum

Anne Winter (Participant)

29 May 2008

Doctoraatsseminarie KULeuven - Departement Sociologie

Anne Winter (Invited speaker)

19 May 2008

Migratie naar Europese steden in de Nieuwe Tijd Oorzaken, patronen en gevolgen

Anne Winter (Speaker)

7 May 2008

Masterclass Leslie Page Moch

Anne Winter (Participant)

11 Apr 2008

Workshop 'De stadswijk als eenheid van beleid?'

Anne Winter (Participant)

10 Apr 2008

Het grote uiteengroeien: Historische wortels van wereldongelijkheid

Anne Winter (Speaker)

10 Mar 2008

7th European Social Science History Conference

Anne Winter (Speaker)

26 Feb 2008 → 1 Mar 2008

Het grote uiteengroeien: Historische wortels van wereldongelijkheid

Anne Winter (Speaker)

29 Jan 2008

Unknown (External organisation)

Anne Winter (Member)

2008 → ...

Port cities and their hinterlands: Migration, trade and cultural exchange

Anne Winter (Speaker)

7 Dec 2007 → 8 Dec 2007

Workshop "The occupation in historical research"

Anne Winter (Participant)
29 Nov 2007 → 30 Nov 2007

Onderzoek naar migratie in de lange negentiende eeuw

Anne Winter (Keynote speaker)
19 Nov 2007

Narratives of poverty: English pauper letters 1780-1840 in comparative perspective

Anne Winter (Speaker)
4 Oct 2007 → 7 Oct 2007

Het publieke van de openbare ruimte. Diversiteit en pluraliteit in de stedelijke publieke ruimte

Anne Winter (Participant)
8 Jun 2007

Le travail entre campagnes et villes : Inégalités, concurrence, régulation (XVIIIe-XXe s.)

Anne Winter (Speaker)
14 May 2007

Masterclass international and global economic history

Anne Winter (Participant)
11 May 2007

The heuristic qualities and deficiencies of world systems theory for students of global economic history

Anne Winter (Participant)
10 May 2007

Cosmologies for the Generation of Useful and Reliable Knowledge in Western Europe and China from the Accession of the Ming to the First Opium War (1368-1839)

Anne Winter (Participant)
9 May 2007

De geleefde stad

Anne Winter (Speaker)
20 Apr 2007

Workshop 'De geleefde stad'

Anne Winter (Speaker)
20 Apr 2007

Workshop 'De gebouwde stad'

Anne Winter (Participant)
8 Mar 2007

Studiedag Gender en Migratie

Anne Winter (Speaker)
15 Dec 2006

Cosmopolis Studiedag: Stad(s)maken - Faire Ville(s) - Making Cities: Transparantie voor een onderzoeksgroep

Anne Winter (Participant)
23 Jun 2006

6th European Social Science History Conference

Anne Winter (Organiser)

22 Mar 2006 → 25 Mar 2006

Dag van de Nieuwste Geschiedenis

Anne Winter (Organiser)
18 Mar 2006

NW Posthumus AIO-conferentie

Anne Winter (Speaker)
28 Apr 2005

PIPA-workshop

Anne Winter (Keynote speaker)
27 Apr 2005

WORK - Vorsersdag

Anne Winter (Organiser)
7 Feb 2005

Namiddaglezingen-cyclus

Anne Winter (Speaker)
25 Jan 2005

Rotterdam van binnen en van buiten: Demografische en sociale ontwikkelingen in Rotterdam in de 19de en 20ste eeuw

Anne Winter (Organiser)
21 Jan 2005

First Flemish-Dutch Conference 'Economic History of the Low Countries before 1850'

Anne Winter (Organiser)
18 Nov 2004 → 19 Nov 2004

15th Annual Workshop of the Economic History Society Women's Committee: Migration in historical perspective

Anne Winter (Organiser)
12 Nov 2004 → 13 Nov 2004

5th European Social Science History Conference

Anne Winter (Speaker)
24 Mar 2004 → 27 Mar 2004

ESTER Research Design Course

Anne Winter (Speaker)
9 Nov 2003 → 12 Nov 2003

NW Posthumus Seminarie 2: Work in Progress, Rijksuniversiteit Groningen

Anne Winter (Speaker)
26 May 2003 → 28 May 2003

NW Posthumus Seminarie I: Een historiografische inleiding, Katholieke Universiteit Nijmegen

Anne Winter (Speaker)
17 Mar 2003 → 19 Mar 2003

Prizes

Francqui Research Professor

Anne Winter (Recipient), 2012

Prijs Professor Dr. R. de Bock-Doehaerd
Anne Winter (Recipient), 2002

Prize I. Vanderschueren
Anne Winter (Recipient), 2010

Prize of the Vlaamse Wetenschappelijke Stichting for the Human Sciences
Anne Winter (Recipient), 2011

Projects

OZRSAB3: The regulation of mobility, labour and poor relief in European social policy, c. 1350-1914
Winter, A.
1/10/20 → 30/09/21

OZR3601: Bilateral cooperation within the framework of a joint doctoral project: benchfee for joint PhD VUB - UGent, HELSEN Lore
Winter, A.
10/01/20 → 9/01/24

FWOTM965: Policing mobility. Daily interactions between the Brussels police and 'marginal migrants', c. 1880-1914.
Winter, A., De Koster, M. & Erkul, A.
1/11/19 → 31/10/21

FOD79: BELMIHISS: Belgian Migration History for Secondary Schools
Winter, A.
1/04/19 → 15/06/21

SRP58: SRP-Onderzoekszwaartepunt: Inequality, Migration and Social Relations in Urban Brabant and Flanders, c. 1350-1914
Winter, A. & Ryckbosch, W.
1/03/19 → 29/02/24

OZR3297: Watching the migrants. Police and migration in Brussels, c. 1914.
Winter, A. & Erkul, A.
1/10/18 → 30/09/19

OZR3254: Cofinancing OZR FWO Hercules Equipment: DH-CoDe - Digital Historical Collection of Court Depositions from the Southern Low Countries (18th-19th centuries).
Ryckbosch, W., Winter, A., Vosters, R., Vandenbussche, W., De Koster, M., Christiaens, J., Vrints, A., Verbruggen, C. & Martens, G.
1/05/18 → 30/04/23

IRP13: Interdisciplinary Research Program: Cities and Newcomers: Arrival infrastructure, multi-scalar statehood and professional intermediaries
Winter, A., van Heur, B., De Melo Melgaço, L., Verhaeghe, P., Corijn, E., Deboosere, P., Enhus, E. & Schuermans, N.
1/04/18 → 31/03/23

OZR3215: Bilateral cooperation within the framework of a joint doctoral project: Bench Fee for Joint PhD, VUB - UGent, Van den Broeck Nick
Winter, A. & Van den Broeck, N.
15/12/17 → 31/12/21

FWOTM870: Surviving old age: coping strategies of the elderly labouring poor in Gent, Brussels and Antwerp, 1750-1850.
Winter, A. & Verbeke, A.
1/10/17 → 30/09/21

OZR3186: Bilateral cooperation for joint PhD project: Bench Fee for Joint PhD VUB-UA, Looockx Kristof
Winter, A. & Looockx, K.
29/08/17 → 31/12/21

OZR3187: Bilateral cooperation for joint PhD project: Bench Fee for Joint PhD VUB-UA, Verbruggen Thomas
Winter, A. & Verbruggen, T.
29/08/17 → 31/12/21

OZR2988: Tussen afhankelijkheid en agency. De overlevingsbasis van bejaarde armen in Antwerpen en Brussel: 1750-1850.
Winter, A. & Verbeke, A.
1/10/16 → 30/09/17

**OZR3350: Bilateral cooperation within the framework of a joint doctoral project: benchfee for joint PhD VUB - UGent-
BAGUET JELTEN**
Winter, A.
17/12/15 → 16/12/19

**OZR2906: Bilaterale samenwerking ikv gemeenschappelijk doctoraatsproject: Bench Fee voor Joint PhD VUB-UGent,
Schepers Josepha Jantina**
Winter, A. & Schepers, M.
1/01/15 → 1/01/19

**FWOAL754: Paying for deservingness? Poor relief administration, entitlement and local economies in the Southern Low
Countries, 1750-1830**
Winter, A., Lambrecht, T. & Van den Broeck, N.
1/01/15 → 31/12/18

FOD6: IMMIBEL: Outcast or Embraced? Clusters of Foreign Immigrants in Belgium, c. 1840-1890.
Winter, A., Feys, T. & Looockx, K.
15/12/14 → 15/03/19

**FWOTM742: Gentrification, migration, and conflicts about neighbourhood development and transformation: a historically
comparative approach.**
Wauters, R., van Heur, B. & Winter, A.
1/10/14 → 30/09/19

FWOTM714: The transformation of urban political elites. The case of sixteenth-century Ghent.
Buylaert, F., Baguet, J., Van Bruaene, A. & Winter, A.
1/10/14 → 30/09/18

HERC29: STREAM - A spatiotemporal research infrastructure for Early Modern Flanders and Brabant
Winter, A., Devos, I. & Plettinck, G.
1/06/14 → 31/05/19

**SRP27: SRP (Groeiers): The cradle of modernity? Social dynamics in the cities of Brabant and Flanders in a comparative
and long-term perspective, 1350-1914**
Winter, A., Buylaert, F., Baguet, J., De Koster, M., Ryckbosch, W., Van den Broeck, N., Verbeke, A., Feys, T., Deneweth,
H., Horemans, B., Plettinck, G., Adriaens, M., Wauters, R., Vermeesch, G., Vanruysseveldt, V., Vervaeke, A. A., Everaert,
J., Erkul, A., Volkov, V., Coppens, A., Debackere, E., Verbruggen, T., Looockx, K., Beeckaert, E., Saelens, W., Leloup, W.,
Degraeve, M. & Schepers, M.
1/03/14 → 28/02/19

OZR2590: Bilateral cooperation within the framework of joint doctoral projects_Bench fee i.h.k. from Joint PhD VUB-University of Antwerp, Ellen Debackere.

Winter, A. & Debackere, E.

1/01/14 → 31/12/14

FWOAL733: Nobility, delights and state formation in the sixteenth-century Netherlands (case studies: Flanders and Brabant)

Buylaert, F., Soen, V., Winter, A. & Adriaens, M.

1/01/14 → 31/12/17

OZR2573: Bilateral cooperation in the framework of mutual doctoral projects: Bench fee for Joint PhD VUB-Universiteit Antwerpen, Alexander Coppens.

Winter, A. & Coppens, A.

1/11/13 → 31/10/14

FWOTM678: Contractors, master craftsmen, workers and merchants. Productionrelations in construction in Brussels, 1685-1789

Winter, A. & Horemans, B.

1/10/13 → 19/12/17

FWOTM701: Entrepreneurial strategies of building contractors. The case of Antwerp, 1490-1670

Deneweth, H., Winter, A. & Bertels, I.

1/10/13 → 30/09/16

IRP4: Cities and Newcomers: Regulating Neighbourhoods of Arrival in Periods of Urban Transition, 1880-1914 and 1980-2015

Winter, A., Corijn, E., De Valk, H., Deboosere, P., Enhus, E. & van Heur, B.

1/04/13 → 31/03/18

FWOTM632: Artists or Beggars? Itinerant Entertainers and Popular Culture in Brabant (1750-1914)

Winter, A. & Vanruysseveldt, V.

1/10/12 → 30/09/16

OZR2381: Ambachtsmeesters, bouwondernemers en openbare werken in Brussel (1600 -1795): een sociaal-economische benadering.

Winter, A. & Horemans, B.

1/10/12 → 30/09/13

ANI119: Mandaat Francqui Onderzoekshoogleraar toegekend aan Anne WINTER : Between belonging and removal: Inclusion/exclusion of migrants in West-European cities, 1450-1914

Winter, A.

1/09/12 → 1/09/15

DWTC278: City and Society in the Low Countries (ca. 1200-ca.1850). The condition urbaine: between resilience and vulnerability

Winter, A., Deneweth, H., Blondé, B., Boone, M., Deligne, C., Aerts, E., Parmentier, I., Bracke, W. & Van Sprang, S.

1/04/12 → 30/09/17

FWOTM590: Access to justice. Urban legal procedures and the usage of the pro bono procedure in civil adjudication in the Low Countries, 16th to 18th century.

Winter, A. & Vermeesch, G.

1/10/11 → 30/09/18

CONI332: Inschrijvingen: Huldeboek en de studiedag in het kader van het emeritaat van Prof. H. Soly.
Winter, A.
2/02/11 → ...

FWOAL577: Between local autonomy and national migration policy: the view regarding 'strangers' in Antwerp and Brussels, 1750-1914

Winter, A., Coppens, A. & Greefs, H.
1/01/11 → 31/12/14

CONO332: Huldeboek en de studiedag in het kader van het emeritaat van Prof. H. Soly.

Winter, A.
3/09/10 → ...

FWOTM521: Life trajectories on the edge: 'beggars' and 'vagabonds' in Belgian state benevolent colonies, 1890-1910.

Winter, A., Lis, C. & Vercammen, R.
1/10/09 → 30/09/13

OZR2014: Research alliance group VUB-UGent: Urban history -CITY

Winter, A. & Van Bruaene, A.
30/09/09 → ...

CONO284: conferentie: "Migrants, entitlements and welfare, 1500-2000: comparative perspectives." 6-7 september 2010

Winter, A.
29/04/09 → ...

CONI284: Inschrijvingen conferentie: "Migrants, entitlements and welfare, 1500-2000: comparative perspectives." 6-7 september 2010

Winter, A.
29/04/09 → ...

OZR1776: Local migration in antwerp, Ghent and Charleroi, 1700-1900.

Winter, A.
1/01/09 → 31/12/09

FWOTM453: Expel or subsidise? Local policies towards newcomers in the Southern Low Countries, c. 1700-1900

Winter, A.
1/10/07 → 30/09/10

FWOTM424: Two centuries of private charity in Antwerp: a study of generous donors and their environment, 1598-1795.

Provoost, H., Winter, A. & Soly, H.
1/10/07 → 31/08/13

OZR793: Subsistentiemigratie in de Belgische gebieden tijdens de transitie van preïndustriële naar industriële samenleving 1765-1848

Soly, H. & Winter, A.
1/01/03 → 31/12/06

FWOTM287: Subsistence migration in the Belgian regions during the transition from pre-industrial to industrial society, 1765-1848

Soly, H. & Winter, A.
1/10/02 → 30/09/06