

Performance of the gas gain monitoring system of the CMS RPC muon detector

CMS Collaboration; Van Doninck, Walter

Published in:
Journal of Instrumentation

DOI:
[10.1088/1748-0221/10/01/C01003](https://doi.org/10.1088/1748-0221/10/01/C01003)

Publication date:
2015

Document Version:
Final published version

[Link to publication](#)

Citation for published version (APA):
CMS Collaboration, & Van Doninck, W. (2015). Performance of the gas gain monitoring system of the CMS RPC muon detector. *Journal of Instrumentation*, 10(C01003), Article C01003. <https://doi.org/10.1088/1748-0221/10/01/C01003>

Copyright

No part of this publication may be reproduced or transmitted in any form, without the prior written permission of the author(s) or other rights holders to whom publication rights have been transferred, unless permitted by a license attached to the publication (a Creative Commons license or other), or unless exceptions to copyright law apply.

Take down policy

If you believe that this document infringes your copyright or other rights, please contact openaccess@vub.be, with details of the nature of the infringement. We will investigate the claim and if justified, we will take the appropriate steps.

Performance of the gas gain monitoring system of the CMS RPC muon detector

This content has been downloaded from IOPscience. Please scroll down to see the full text.

2015 JINST 10 C01003

(<http://iopscience.iop.org/1748-0221/10/01/C01003>)

View [the table of contents for this issue](#), or go to the [journal homepage](#) for more

Download details:

IP Address: 134.184.24.71

This content was downloaded on 11/03/2015 at 08:54

Please note that [terms and conditions apply](#).

12th WORKSHOP ON RESISTIVE PLATE CHAMBERS AND RELATED DETECTORS,
 23–28 FEBRUARY 2014,
 TSINGHUA UNIVERSITY, BEIJING, CHINA

Performance of the gas gain monitoring system of the CMS RPC muon detector

L. Benussi,^{a,1} S. Bianco,^a L. Passamonti,^a D. Piccolo,^a D. Pierluigi,^a G. Raffone,^a
 A. Russo,^a G. Saviano,^{a,2} Y. Ban,^b J. Cai,^b Q. Li,^b S. Liu,^b S. Qian,^b D. Wang,^b Z. Xu,^b
 F. Zhang,^b Y. Choi,^c D. Kim,^c S. Choi,^d B. Hong,^d J.W. Kang,^d M. Kang,^d J.H. Kwon,^d
 K.S. Lee,^d S.K. Park,^d L. Pant,^e V.B.J. Singh,^f A.M.R. Kumar,^f S. Kumar,^f
 S. Chand,^f A. Singh,^f V.K. Bhandari,^f A. Cimmino,^g A. Ocampo,^g F. Thyssen,^g
 M. Tytgat,^g W. Van Doninck,^h A. Ahmad,ⁱ S. Muhammad,ⁱ M. Shoaib,ⁱ H. Hoorani,ⁱ
 I. Awan,ⁱ I. Ali,ⁱ W. Ahmed,ⁱ M.I. Asqhar,ⁱ H. Shahzad,ⁱ A. Sayed,^l A. Ibrahim,^l
 Y. Assran,^l R. Aly,^l A. Radi,^l T. Elkafrawi,^l A. Sharma,^m S. Colafranceschi,^m
 M. Abbrescia,ⁿ P. Verwilligen,ⁿ S. Meola,^o N. Cavallo,^o A. Braghieri,^p P. Montagna,^p
 C. Riccardi,^p P. Salvini,^p P. Vitulo,^p A. Dimitrov,^q R. Hadjiiska,^q L. Litov,^q B. Pavlov,^q
 P. Petkov,^q A. Aleksandrov,^r V. Genchev,^r P. Iaydjiev,^r M. Rodozov,^r G. Sultanov,^r
 M. Vutova,^r S. Stoykova,^r H.S. Ibargüen,^s M.I. Pedraza Morales,^s S. Carpenteyro
 Bernardino,^s I. Bagaturia,^t Z. Tsamalaidze,^t C. Avila,^u A. Cabrera,^u L. Chaparro,^u
 J.P. Gomez,^u B. Gomez,^u J.C. Sanabria,^u S.K. Lee,^d A.K. Mohanty,^e R.G. Thomas,^e
 R. Sehgal,^e R. Chudasama^e and S.T. Sehgal^e

^aLaboratori Nazionali di Frascati dell'INFN,
 Frascati, Italy

^bPeking University,
 Peking, China

^cSKK University,
 Seoul, South Korea

^dKorea University,
 Seoul, South Korea

^eBARC,
 Mumbai, India

¹Corresponding author.

²Also at Università degli Studi di Roma La Sapienza, Rome, Italy

^f *Panjab University,
Chandigarh, India*

^g *Ghent University,
Ghent, Belgium*

^h *VUB,
Bruxelles, Belgium*

ⁱ *NCP,
Islamabad, Pakistan*

^l *Academy of Scientific Research and Technology of the Arab Republic of Egypt,
101 Sharia Kasr El-Ain, Cairo, Egypt*³

^m *CERN,
Geneve, Switzerland*

ⁿ *Università di Bari and INFN Bari,
Bari, Italy*

^o *Università di Napoli and INFN Napoli,
Napoli, Italy*

^p *Università di Pavia and INFN Pavia,
Pavia, Italy*

^q *University of Sofia,
Sofia, Bulgaria*

^r *INRNE,
Sofia, Bulgaria*

^s *Puebla University,
Puebla, Mexico*

^t *Tbilisi University and IHEPI,
Tbilisi, Georgia*

^u *Universidad de Los Andes,
Bogota, Colombia*

E-mail: luigi.benussi@lnf.infn.it

ABSTRACT: The RPC muon detector of the CMS experiment at the LHC (CERN, Geneva, Switzerland) is equipped with a Gas Gain Monitoring (GGM) system. A report on the stability of the system during the 2011-2012 data taking run is given, as well as the observation of an effect which suggests a novel method for the monitoring of gas mixture composition.

KEYWORDS: Muon spectrometers; Gas systems and purification; Materials for gaseous detectors; Particle tracking detectors (Gaseous detectors)

³Also funded by the European FP7 EENP2 project

Contents

1	Introduction	1
2	Experimental setup	1
2.1	High-voltage scans	3
2.2	Time transient	3
3	Conclusions	4

1 Introduction

The Resistive Plate Counter (RPC) muon detector of the Compact Muon Solenoid (CMS) experiment at the Large Hadron Collider (LHC) at CERN is equipped with a Gas Gain Monitoring (GGM) system. Detailed descriptions of the GGM can be found in [1–4]. The system has been in operation for the whole duration of the 2011-2012 CMS data taking period. A report of both its performance and the experience gained with it is given. An effect which may suggest a novel method for the monitoring of gas mixture composition is discussed.

2 Experimental setup

The GGM system is composed of 12 square single-gap RPC detectors arranged as a cosmic ray hodoscope (figure 1). The GGM is located on the surface, in the SGX5 gas room of the CMS experimental area.

The system is designed to provide a fast and accurate determination of any shift in the working point of its chambers due to gas mixture changes. It compares three different gas mixtures from the CMS experiment: a newly supplied fresh gas mixture, and the gas mixture before and after the filters of the closed-loop recirculation system. The closed loop is fed with one volume (14m^3) gas exchange per hour [5].

The 12 single bakelite gaps have a double pad readout (4 trigger gaps, 8 signal gaps) which allows removal of coherent noise (*i.e.*, the environmental baseline noise showing on both pads) by subtracting algebraically signals from both pads. The average event rate is 5 Hz, corresponding to about 30 minutes for 10000 events. Anode charge distributions are collected for blocks of 30 minutes, and changes of the charge averages over time provide indications of changes in the working point of the GGM chambers. An automatic compensation of environmental effects on the chamber responses is achieved by means of two-gap ratios of anode charge distributions (figure 2) [3].

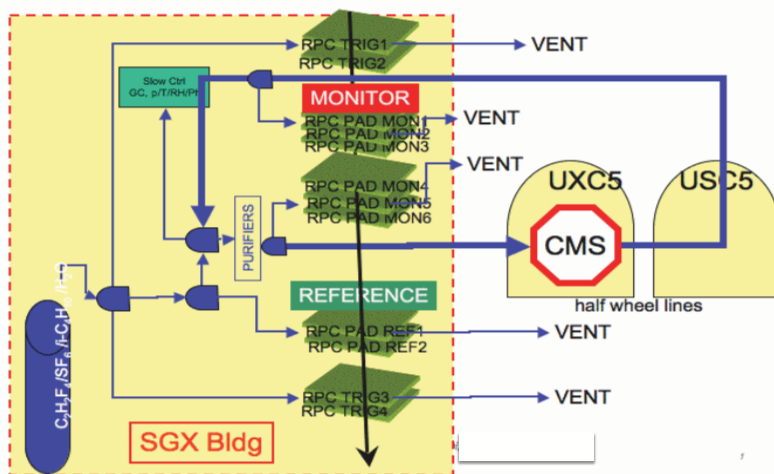


Figure 1. Schematic layout of the GGM and closed-loop gas recirculation system of the CMS RPC detector.

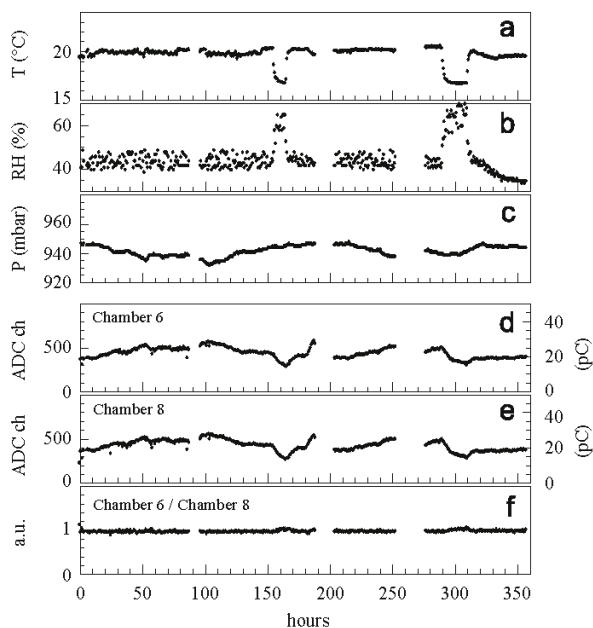


Figure 2. The principle of automatic compensation of environmental effects by charge ratios: environmental variables such as temperature (a), relative humidity (b), atmospheric pressure (c), gaps anodic average charges (d,e) and their ratio (f).

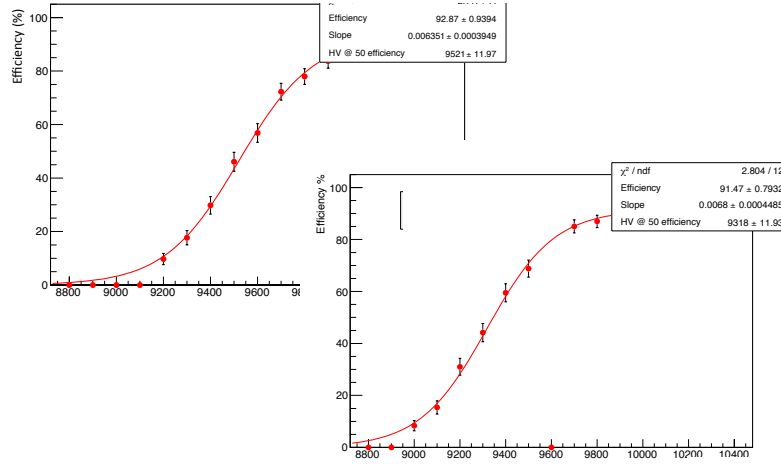


Figure 3. Typical HV scans for two GGM single-gap chambers.

2.1 High-voltage scans

The GGM system was designed to detect changes in the working point of the chambers via differences between a fresh gas mixture, and the mixtures before and after the purifiers of the gas recirculation system, using by also the charge ratio algorithm. Next to that, weekly RPC high voltage (HV) scans were performed which additionally provided a direct measurement of the GGM working point, allowing to spot changes in the gas mixture composition.

Figure 3 shows typical HV scans of two GGM single-gap chambers, as a function of effective HV supply

$$HV_{\text{eff}} = HV \frac{p_0}{p} \frac{T}{T_0}. \quad (2.1)$$

The HV_{eff} value corresponding to the effective voltage where the chamber efficiency ϵ is at 50% of its maximum

$$HV50 \equiv HV_{\text{eff}}(\epsilon = \epsilon_{\text{max}}/2) \quad (2.2)$$

is the most sensitive parameter to any change of the working point.

The HV50 parameter is shown for a few GGM chambers in figure 4 as a function of time for the 2011-2012 data taking period.

Each HV50 value is sensitive to common environmental effects that are not corrected for by the HV feedback. A normalization method taking the ratio of the HV50 values for the gas mixtures in the closed-loop system and the fresh gas mixture, provides a stable response over a period of several months (figure 5). $\Delta HV50$ is the difference in the HV50 parameter for the before- or after-type gaps normalized to the fresh-type gaps. The distribution of $\Delta HV50$ parameter over time is compatible with statistical errors and does not suggest any systematic effect that may indicate a possible problem on the gas mixture composition.

2.2 Time transient

An unexpected feature was observed thanks to a failure of one of the mass flow controllers (MFC) of the gas mixer (figure 6). The duration of each MFC failure was estimated in approximately 30

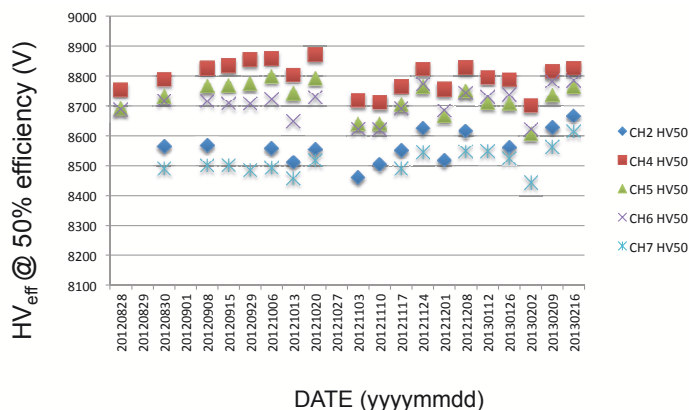


Figure 4. Dependence of HV50 (defined in text) as a function of time over the 2011-2012 data taking period.

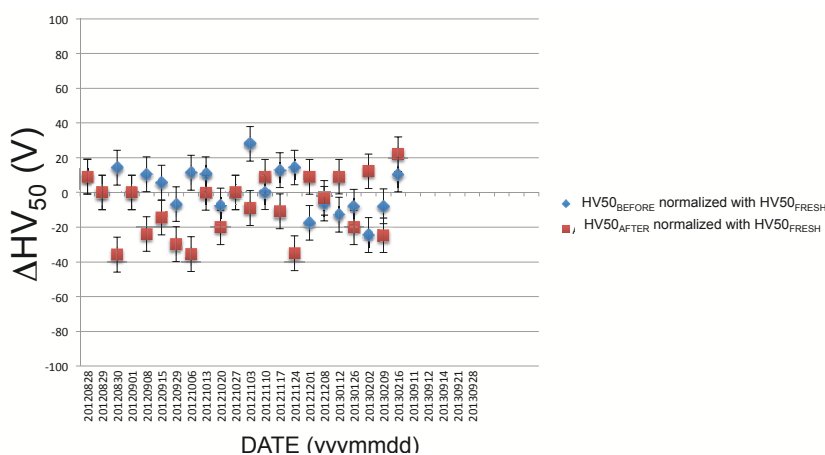


Figure 5. Dependence of normalized HV50.

minutes. The pattern observed in all charge ratios is interpreted as the interference of the working point changes due to the gas mixture change, convoluted with the transit time of the gas mixture inside the closed-loop recirculation system. The fresh gas mixture reaches the GGM before both the affected gas mixtures from before and after the purifiers in the closed-loop system, thus causing the interference pattern shown in figure 7.

3 Conclusions

Preliminary results on the operational experience of the GGM system during the CMS 2011-2012 data taking period were given. Weekly HV scans provide direct measurements of the GGM working point. When corrected for common environmental effects, the system shows a stability in working point at the level of 20V over nearly two years. A failure in one of the MFC provided hints to define a tool for the fast monitoring of the gas mixture composition. If confirmed, the gas mixture composition might be monitored by the time distribution pattern of the fresh-, before-, and after-purifier type gas mixture average charge ratios. A simulation analysis is in progress to verify such an interpretation.

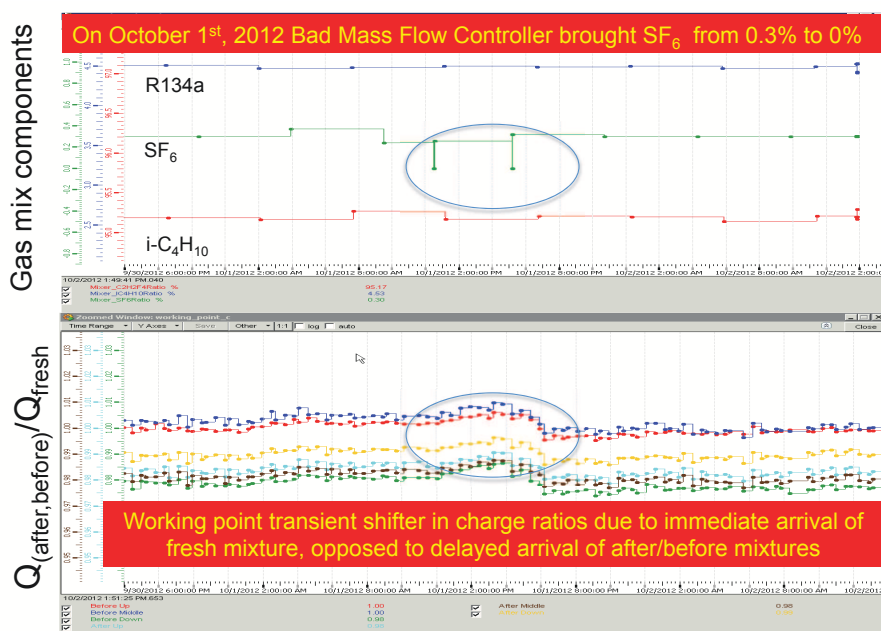


Figure 6. Failure of SF₆ mass flow controller (top); interference pattern observed in the online monitoring tool for all charge ratios of the GGM.

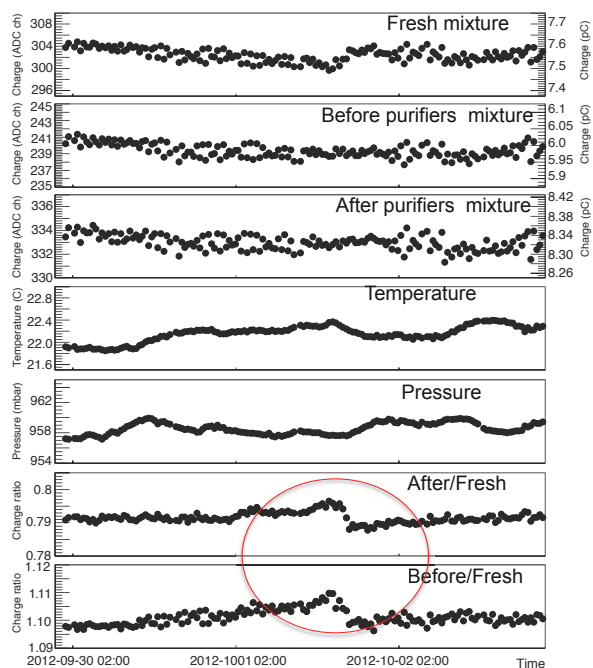


Figure 7. Analysis of the transient interference pattern and correlation with charges and environmental parameters.

References

- [1] S. Colafranceschi et al., *Performance of the Gas Gain Monitoring system of the CMS RPC muon detector and effective working point fine tuning*, *2012 JINST 7 P12004* [[arXiv:1209.3893](#)].
- [2] S. Colafranceschi et al., *Operational experience of the gas gain monitoring system of the CMS RPC muon detectors*, *Nucl. Instrum. Meth. A* **617** (2010) 146.
- [3] L. Benussi et al., *Sensitivity and environmental response of the CMS RPC gas gain monitoring system*, *2009 JINST 4 P08006* [[arXiv:0812.1710](#)].
- [4] L. Benussi et al., *The CMS RPC gas gain monitoring system: An Overview and preliminary results*, *Nucl. Instrum. Meth. A* **602** (2009) 805 [[arXiv:0812.1108](#)].
- [5] M. Capeans, R. Guida, F. Hahn, S. Haider and B. Mandelli, *RPC performances and gas quality in a closed loop gas system for the new purifiers configuration at LHC experiments*, *2013 JINST 8 T08003*.